



Clamping solutions for the pipeline

Piggyback System

A pipeline laying operation may have a requirement to simultaneously lay a small diameter service line or umbilical. During the installation, to ensure that the secondary lines are adequately supported between surface and seabed, they may be attached to the main pipeline using a clamp arrangement. This attachment method is known as piggybacking.

The Piggyback System is a pair of “snap-together” two-piece injection moulded marine grade polypropylene saddles. The pieces are fixed in position by a highly corrosion-resistant Alloy 625 circumferential banding strap. It also has a sealing assembly using a unique technique to ensure no movement in the seal.

For post installation of the secondary line the diverfriendly piggyback guide was designed to improve safety. The guide uses edge treated banding and an updated fastening system which eliminates sharp edges reducing the risk of cuts to the diver. The innovative design reduces handling and improves installation efficiency and time enabling significant cost savings while increasing diver safety.

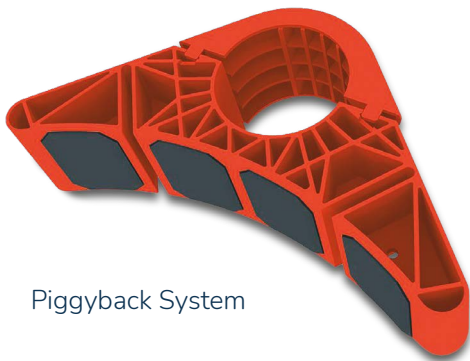


Benefits

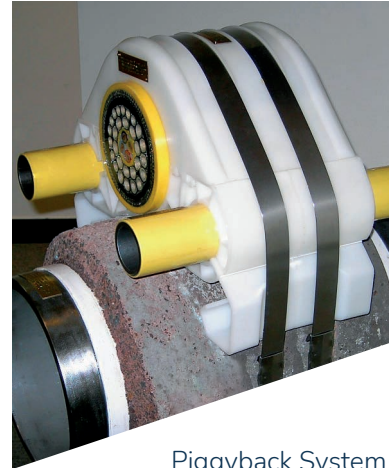
- Durable
- Easy installation of the secondary line
- Excellent impact and abrasion resistance
- Long term service
- Light weight
- Minimal creep
- Minimal deformation
- Tough

Applications

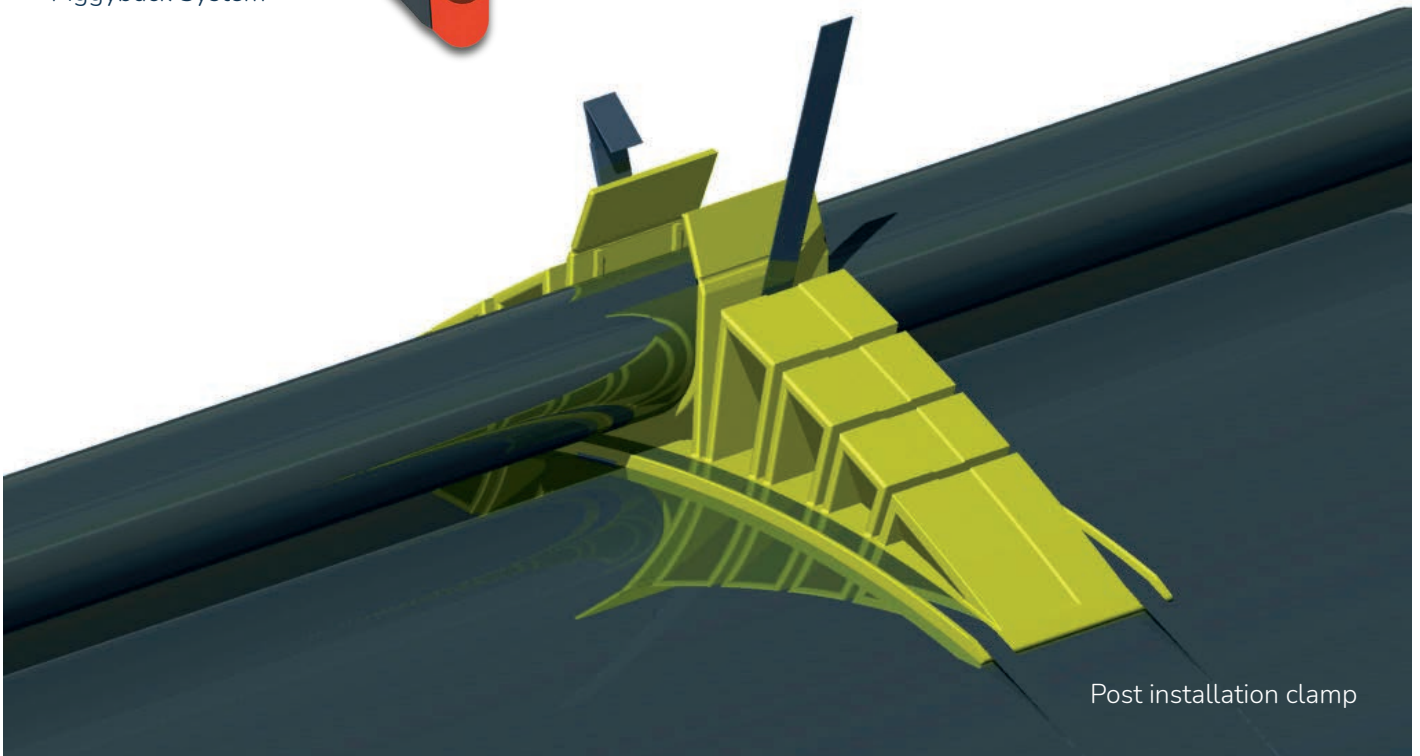
- Cable
- Pipeline



Piggyback System



Piggyback System



Post installation clamp

CRP Subsea delivers innovative and reliable offshore solutions that maximise business performance to meet your needs. Our dedicated and highly skilled staff are always on hand to provide seamless process support from initial idea, through to delivery and beyond.